

# METHODIST CONNECTION

December 2013

## Upcoming Events

**12.10**

Crafty Christians

**12.15**

Christmas Concert

**12.15**

Youth Progressive Dinner

**12.24**

Christmas Eve Service

**12.24-25**

Office Closed

**12.31**

End of year giving due

## From the Pastor's Pen

### *"Finding Bethlehem in the Midst of Bedlam"*

James Moore, the author of our Advent study, is now retired after a long ministry in the Houston area. He has been a popular writer and preacher, but this is the first of his studies I have ever done as a church wide study. I am looking forward to it in part because it has already begun to speak to me about finding the Lord in the midst of a very busy lifestyle.

I hope you are participating in the study either through a Sunday school class or on your own reading the book as we study it and preach the themes each Sunday in December. One of the things I really like about the study is the daily devotions that are included with it and help you keep focused on the theme throughout the week.

One of the things this study does not have that we have had available the last two years is a video that goes with it. Would you understand me if I told you that James Moore is "old school?" He would fit in very well in our congregation, where for the most part, video is not necessary for worship. That may require a slight adjustment for some of us in the Sunday school hour, but, hey, it's only a month!

Here is my invitation to you as we work through this study together. I'd love to hear your stories of how you found Bethlehem in the midst of Bedlam this month. Drop me an email, give me a phone call, or give me a tweet @DavidRRucker. Your stories can inspire and encourage me, and if and only if you are willing, I might share some of them with the rest of the church. I'll keep the source anonymous if you wish.

Continued on page 2...





**I will praise You, for I am fearfully and wonderfully made;  
Marvelous are Your works, And that my soul knows very well.**

## Pastor's Pen

*Cont.*

Here is my invitation to you as we work through this study together. I'd love to hear your stories of how you found Bethlehem in the midst of Bedlam this month. Drop me an email, give me a phone call, or give me a tweet @DavidRRucker. Your stories can inspire and encourage me, and if and only if you are willing, I might share some of them with the rest of the church. I'll keep the source anonymous if you wish.

My idea is that God is doing a lot of work in all of our lives and we are missing something wonderful if we are not sharing it or hearing it shared by others. This can be one of our greatest ministries and might even be the trigger that helps someone else find Bethlehem in the midst of Bedlam!

See you Sunday in the place where God is always near!

Yours in Christ,

*Bro. David* (home: 940-683-1724;  
[davidrucker@fumcbridgeport.org](mailto:davidrucker@fumcbridgeport.org))

## YOUTH NEW ~

### Youth Progressive Dinner

Our youth will have a progressive dinner on December 15, 2013 from 5:00 pm-8:00 pm with a gift exchange. \$10 max for gift.

### Youth Mid-Winters Retreat 2014

#### Jr. High

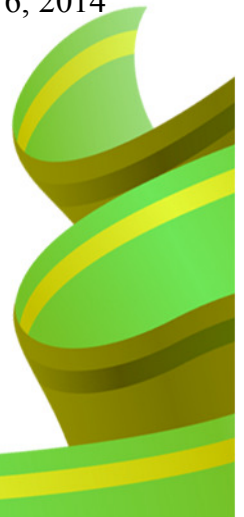
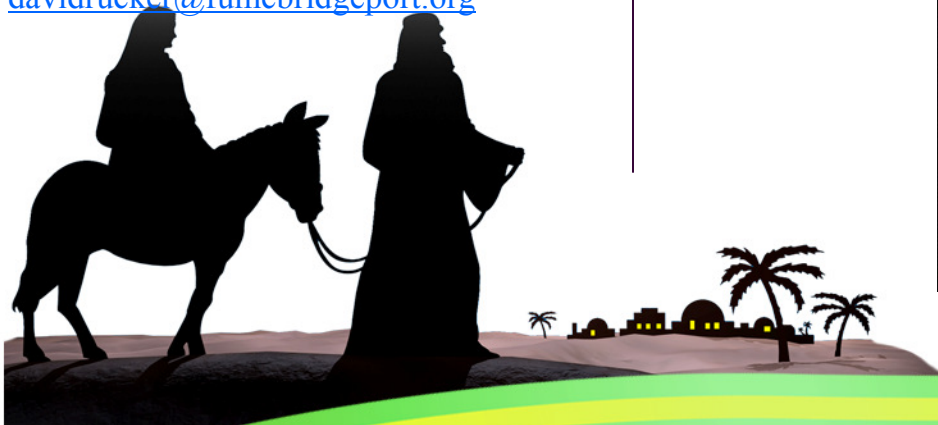
January 24-26, 2014

#### Sr. High

February 7-9, 2014

**“DON'T SAY NO-WAY, SAY YAHWEH!”**

Early Bird Registration is \$100 until January 6, 2014





## A NOTE OF THANKS

Dear Church Family,

Thank you for the Thanksgiving Dinner. It was delicious! I was so surprised. It means so much to be remembered. Thank you once again.

—Nelda Adams

Dearest Church Family,

Words cannot express the gratitude we feel for the kindness and care you expressed during Carl Ray's illness and passing away. Your prayers, visits and food will not soon be forgotten. Thank you does not seem enough for the love you have shown. We are so grateful.

-The family of C.R. Jones

Dear Church Family,

I would like to thank everyone for their special thoughts and prayers during this difficult time.

-Gene Larrow

# Loaves & Fishes Food Pantry

### WE NEED YOUR HELP!

As we go into the Christmas Season it is a very stressful time for many families. Some do not have enough income to provide food whether due to a loss of a job or sometimes and unexpected illness.

This also makes it a very busy time for our Pantry. We are having a food drive for the month of December to help re-stock our shelves. If you could bring a couple of these items it would be a tremendous blessing.

Items we need:

- complete pancake mix
- syrup
- peanut butter
- jelly
- spaghetti sauce
- canned vegetables
- soup
- Cereal
- Hamburger Helper
- Chili
- Macaroni & Cheese

## Holiday Blessings

Let's be a blessing to others. We are preparing to give out Christmas Baskets soon and will be taking donations to help provide a family in need with a Christmas dinner. Be on the look out for a flyer with a list of items needed or you can make a monetary donation to the church and note in memo line for Christmas baskets.

We are also currently accepting donations of electric heaters. As we go into Winter there are many families that do not have the funds to buy the amount of propane that is required to have it delivered. An electric heater would be a wonderful blessing to help keep them warm until they are able to purchase some.



The last day to get donations in for 2013 will be Wed. Dec. 31st.

If you need to make special arrangements please call Tamara in the office 940-683-2780



# 2013 CHRISTMAS CELEBRATION CONCERT

December 15th | 8:45 & 11:00 a.m.

First United Methodist Church of  
Bridgeport's Chancel Choir

Invites you to join them for a musical  
celebration of our Lord and Savior's Birth.







# Christmas Eve

December 24<sup>th</sup> | 5:00 & 9:00 pm

*Candles, Carols and  
Communion*

*Please join us in Worship for this very  
special Christmas event.*

*Nursery Provided*